



# 2018 Annual Report



**BINAA**  
Organization for Development





Albrdkulai Village in Rural Idlib in Syria

# CONTENTS

ABOUT BINAA .....	04
FOREWORD .....	07
2018 IN NEED .....	08
OUR IMPACT IN 2018 .....	10
FOOD SECURITY & LIVLIHOOD .....	15
EDUCATION .....	19
SHELTER & NFI .....	23
WATER ,SANITATION & HYGIENE.....	27
OUR PARTNERS .....	30



# ABOUT BINAA FOR DEVELOPMENT

Binaa Organization for Development, a non-governmental non-profit humanitarian organization, was founded and licensed in January 2014 in Turkey.

Cross-border humanitarian response was the starting point of this organization.

Binaa came to existence as a natural evolution to an initiative that was started in 2013 by a group of Syrian engineers, entrepreneurs and expatriates who have worked in multiple diverse fields in many countries and have amassed more than 40 years of collective experience.

Those founders have been interested in community involvement and humanitarian response to provide support, development and empowerment to needy communities and individuals.

Binaa operates based on its understanding and reliance on sustainable development and societal participation as a foundation to help communities identify their needs. Binaa provides innovative solutions and implements

the most efficient, effective and impactful projects to improve communities' current reality and achieve sustainability.

Binaa considers its programs as a communication platform where its teams, volunteers, partners and local communities share their experiences through a group of services that solve critical problems and implement feasible solutions. Benefiting from collective and accumulated experience, these solutions are related to current reality and suitable to local communities.

In its operations, Binaa follows a disciplined methodology to develop, implement, monitor, and evaluate its operations and outputs to ensure accountability to communities and partners while corresponding to Binaa's values, vision and mission and humanitarian work principles.

Binaa is characterized by its technical and engineering staff that has extensive and diverse experience inside and outside Syria. In addition, Binaa strives to train and develop its employees so they gain the necessary and important experiences in critical specialties such as infrastructure, education, protection and livelihood.

Binaa has always been eager to provide its team members with essential knowledge and necessary expertise in the humanitarian principles, international humanitarian law and service provision techniques and standards.

During the last years, Binaa has established effective partnerships with local and international NGO's and UN agencies.

This has effectively led to a huge impact and secured necessary financial funding to implement tens of humanitarian and developmental projects and provide services to more than 4,000,000 beneficiaries.

These partnerships have also helped develop Binaa's staff capabilities.

In the coming years, Binaa will pursue its endeavors to provide services inside Syria and expand its outreach to local communities out of Syria to meet humanitarian and developmental needs of communities and individuals that are inflicted by conflicts in the region.

## OUR MISSION

To support and empower individual and communities that are inflicted by conflicts to gain safe and respectable lives.

## OUR VISION

Binaa strives to be a pioneering regional humanitarian organization. Binaa works hard so those who are inflicted by conflicts have better lives and secure future through providing them the most innovative and efficient services in the fields of development, education, restructuring and relief within a professional and attractive work environment.


## OUR VALUES


- Quality
- Accountability
- Efficiency
- Collaboration
- Respect
- Continuous development


# 2018 IN NEED \*

 **13.5 M** PEOPLE IN NEDD

 **6.1M** Internally displaced persons

 **6.5M** People are facing acute food insecurity and large food consumption gaps.

 **35%** Of population is relying on unsafe water sources to meet daily water supply needs.

 **5.3M** People live in shelters with multiple inadequacy issues.

\* HNO Syria 2018


▶ Entering the eighth year of the crisis, the scale, severity, and complexity of needs across Syria remain overwhelming. Some 11.7 million people in Syria requires humanitarian assistance, 5.6 million of which are in acute need due to a convergence of vulnerabilities resulting from displacement, exposure to hostilities, and limited access to basic goods and services. Conflict continues to be the principal driver of humanitarian needs, with the

civilian population in many parts of the country exposed to significant protection risks which threaten life, dignity and wellbeing on a daily basis.

BINAA provided emergency life-sustaining support to 524,364 people in Northern Syria affected by ongoing conflict, while we continually sought to adapt our activities, based on the situation on the ground, to try to reach those most in need.



# OUR IMPACT IN 2018

**58**   
schools returned to  
service accommodating  
21000 students

**873**   
Job opportunities  
cash for work  
teachers  
volunteers

 **250,000**  
people were provided  
with clean water

 Our educational  
services reached  
**148,000**  
students

 **120,000**  
Donums were planted

 **9,000**  
families were provided  
with shelter

**524,364**

SYRIANS BENEFITED FROM BINAA'S  
INTERVENTIONS IN 2018

► Student girl playing at  
“Binaa” school in Rural Aleppo.





4,510,760

Students at “Binaa school” run by Binaa for development in Rural Aleppo



**SYRIANS BENEFITED  
FROM BINAA'S  
INTERVENTIONS  
SINCE 2014**





## FOOD SECURITY AND LIVELIHOOD

**B**INAA and under their strategy for enhancing social and economic-self-reliance and inclusion of extremely vulnerable and marginalized households with projects designed to improve access to individuals and households to sustainable livelihoods, assisted a total of 43,948 people in Northern Syria ( Northern and western Aleppo countryside) with emergency food assistance which entails Ready to Eat rations, food items and/or other kinds of emergency assistance during sudden onset of displacements. Agriculture and livelihoods assistance in addition to technical support and guidance were provided to 29,446 households including 15030 winter agricultural inputs kits which entail (Cabbage, cauliflower, bean, spinach) seeds, fertilizers and pesticides, and 300 summer input kits (Tomato, Pepper, Eggplant) seeds, fertilizers and pesticides. Also, 12,548 households were provided with small livestock production and animal feed support. Furthermore, BINAA helped farmers plant 10,250 Donum of wheat by distributing 14416 Wheat Agricultural inputs kits.

In 2018, BINAA also supported small-scale herders to protect livestock assets and reduce animal production losses while gradually strengthening the provision of essential services through vaccination and provision of fodder and to avoid asset depletion affecting food and nutrition especially for women and children.

By encompassing a wide array of activities customized to meet a community's specific needs, BINAA programming were designed to bolster agricultural production and enhance the vulnerable community's access to sustainable sources of food and income.



Distribution of wheat seeds in Rural Aleppo



# 29,446

Farmers  
were provided with  
Agriculture and livelihoods assistance





# FOOD SECURITY AND LIVELIHOOD IN NUMBERS

BINAA RESULTS IN 2018



15,030

Winter Agricultural inputs kits



14,416

Wheat Agricultural inputs kits



1,680

Ready to eat Meals



12,524

Teachers provided with incentives

Farmer Plant wheat in Rural Aleppo



Binaa focus on supporting value chains through income generation activities, provision of agriculture and livestock inputs, support and restore local market, in line with training for veterinarians and agronomists to restore the local system and capacities in targeted locations



43,948

BENEFITED FROM BINAA'S SERVICES IN FOOD SECURITY

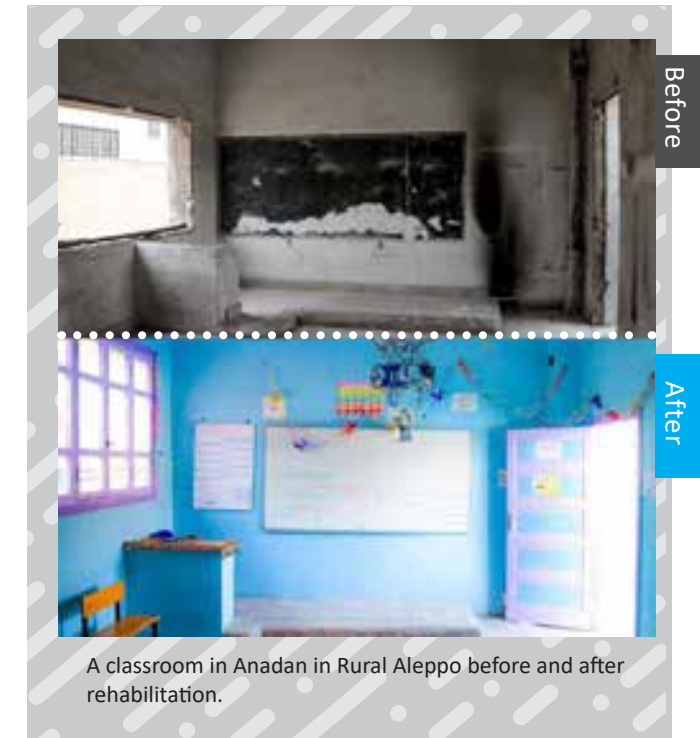




## EDUCATION

**B**INAA provided safe and adequate learning environments for more than 138,669 conflict affected IDPs and host communities' children through the rehabilitation of dilapidated classrooms in 58 schools and provision of school furniture for 84 schools including white boards and students' desks. In addition, BINAA provided almost 100,000 children with students' kits and provided 490 teachers with monthly incentives to ensure that children have access to quality education. Furthermore, BINAA Helped increase children 'resilience to cope with the impacts of extreme and harsh winters through provision of appropriate, gender and age specific winter clothing kits and Fuel for heating in 155 schools.

BINAA Education interventions contribute to raising community awareness about the importance of education for children through community-based campaigns with targeted messages. BINAA 'Back to School' initiative helped reduce drop-out and promote student retention. Child Friendly Spaces are a common feature of BINAA programming especially during emergencies as we strive to provide a safe environment for children to spend their time meaningfully and to help children who have been affected by disasters recover and feel normal again. Hence, BINAA supported semi-structured recreational activities to involve children and adolescents and engage them in games and sport activities through distributing more than 814 recreational kits. These activities have the multifold goal of supporting the release of energy and anxiety through physical play, and promoting the development of important life-skills such as teamwork and cooperation, negotiation, empathy, and managing anger and stress.



# 20,975

Children  
are now benefitting  
from therehabilitation  
of 58 schools.



# EDUCATION IN NUMBERS

BINAA RESULTS IN 2018



**58** Schools Rehabilitated



**7** Back to School Campaigns



**83** Schools provided with Furniture



**490** Teachers provided with incentives



**99,965** Students Kits



**155** Schools provided with Fuel and firewood for heating



**2,051** Educational Kits



**36** Schools provided with winter clothes



Binaa Started working in education in 2014. We focue on Scaling up equitable access to learning opportunities, Enhancing the quality of teaching and learning, Special focus on areas where schools are over-crowded with large influx of IDPs and Support and promote for women role in the education



**148,425**

BENEFITED FROM BINAA'S SERVICES IN EDUCATION





## SHELTER AND NFI

Through its housing and infrastructure programming, BINAA seeks to increase the housing capacity of the vulnerable communities and provide them with decent and dignified shelter. In 2018, BINAA was invested in providing IDPs, host communities, and other conflict-affected populations with adequate shelter and acceptable living conditions, while rehabilitating community infrastructure contributing to comprehensive protection and social and economic wellbeing. BINAA supported more than 22,757 Syrian beneficiaries through provision of cash for rent, provision of cash for work, house rehabilitation and collective centers rehabilitation, and basic shelter upgrades and repair across different areas. In addition, BINAA supported provision of emergency shelter kits and core household items (including mattresses, blankets, carpets, plastic tarpaulins, plastic mats, heating stoves, kitchen sets, jerrycans, etc.) and season-specific NFI assistance during the harsh weather conditions.



A house in Sallah al-Zuhur in Rural Idlib before and after rehabilitation.



# 4,829

Houses  
and Collective Center  
were rehabilitated



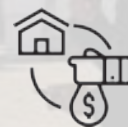
# SHELTER AND NFI IN NUMBERS

BINAA RESULTS IN 2018

► Distribution of Non food items kits to IDPs in Kafr Halab town in northern Syria



**4,813** House Rehabilitated



**4,503** House supported with cash for rent



**16** Collective Centers Rehabilitated



**1,017** NFI kit distributed



BINAA's Shelter program aims to improve protection and social cohesion, to provide the durable, sustainable shelter solutions with fit with community culture, humanitarian standards and principles considering the HLP and quality technical standards. Inline with providing the life-saving interventions in emergencies.



**48,634**

BENEFITED FROM BINAA'S SERVICES IN SHELTER & NFI





## WATER SANITATION & HYGIENE

**B**INAA' WASH interventions supported provision of safe drinking water and hygiene kits, construction and maintenance of sanitation and hygiene facilities in displacement sites and schools' facilities, in addition to waste management assistance.

BINAA' WASH projects implemented in 2018 reached at least 252,796 people with improved, safe, sufficient and adequate water supply and provided 10,500 people with access to critical hygiene items. At least 181,300 people gained access to sanitation facilities and services including handwashing basins, latrines and bathing facilities. BINAA also conducted rapid WASH needs assessments, the repair and rehabilitation of damaged WASH facilities and Sewage systems, in addition to 12 WASH training of community mobilisers and the establishment of cost recovery system (tariff system) in 6 communities to ensure sustainable water services.

Where appropriate, WASH interventions were carried out as part of multi-sectoral projects which combined WASH assistance with education, shelter/ NFIs, food security assistance to maximize operational complementarity and the collective impact of interventions targeting the most vulnerable.



Rehabilitation of the water supply system in Maarat al-Numaan city in northwestern Syria.



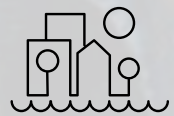
# 14

### Water Stations and Infrastructure Rehabilitated



# WATER SANITATION & HYGIENE IN NUMBER

BINAA RESULTS IN 2018



**8** Water Infrastructure  
Rehabilitated



**7** Sewage Infrastructure  
Rehabilitated



**6** Tarif System Applied



**1,200** Hygiene kits  
distributed



BINAA's WASH program aims to To improve people access to adequate safe water, hygiene and sustainable water and sanitation services by Restoration of existed water and sewage infrastructure , Support systems and operation sustainability, Improve WASH in schools and health facilities and Support to improve the quality assurance of the WASH facilities and systems.



# 252,919

BENEFITED FROM BINAA'S SERVICES IN WATER SANITATION & HYGIENE

► Campaign in Maarat al-Numaan To Raise Awareness About Good Hygiene Habits



# OUR PARTNERS

## GOVERNMENT INSTITUTIONS



## INGO



## UN AGENCIES



## SYRIAN NGO



Binaa is a member of  
Syrian NGOs Alliance





BINAA  
Organization for Development



/ Binaasyria