



**BINAA**  
Organization for Development



# 2017 Annual Report



BinaaSyria





Copyright © 2018  
Binaa Organization for Development Annual Report

    /binaasyria

info@binaadev.org  
www.binaadev.org



# Table of Contents

08	Where We Work
10	Results in Numbers
12	WASH Projects
16	Food Security Projects
21	Shelter & NFI Projects
26	Health Projects
30	Education Projects
32	Early Recovery



A close-up photograph of two young Syrian children. The child in the foreground is a boy with dark, curly hair, wearing a blue jacket, looking directly at the camera with a slight smile. Behind him, another child is partially visible, also smiling. The background is slightly blurred, showing other people and what appears to be an outdoor setting.

## Mission

BINAA is dedicated to inspire efficiency in syrian people and implement sustainable programs.

## Vision

Syrian society has the best ability to mobilize the available resources and Syrian people have the opportunity to achieve their self-realize.



## Binaa Values



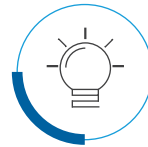
**High Quality**



**Continuous Development**



**Sustainability**



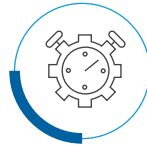
**Innovation**



**Human Dignity**



**Model Project**



**Efficiency**



**Excellence**



## What Binaa does



### **Shelter and NFIs Projects:**

improve housing and shelter conditions, weather and winter protection, construction of mud villages.



### **Education:**

Education Support Projects including Operations, Rehabilitation, learning materials and capacity building .



### **Health:**

Fortification, rehabilitation and construction works and Engineering studies for Safe Hospitals and health facilities



### **FSL Projects:**

Support livelihoods and food security through sustained agricultural and livestock projects.



### **WASH Projects:**

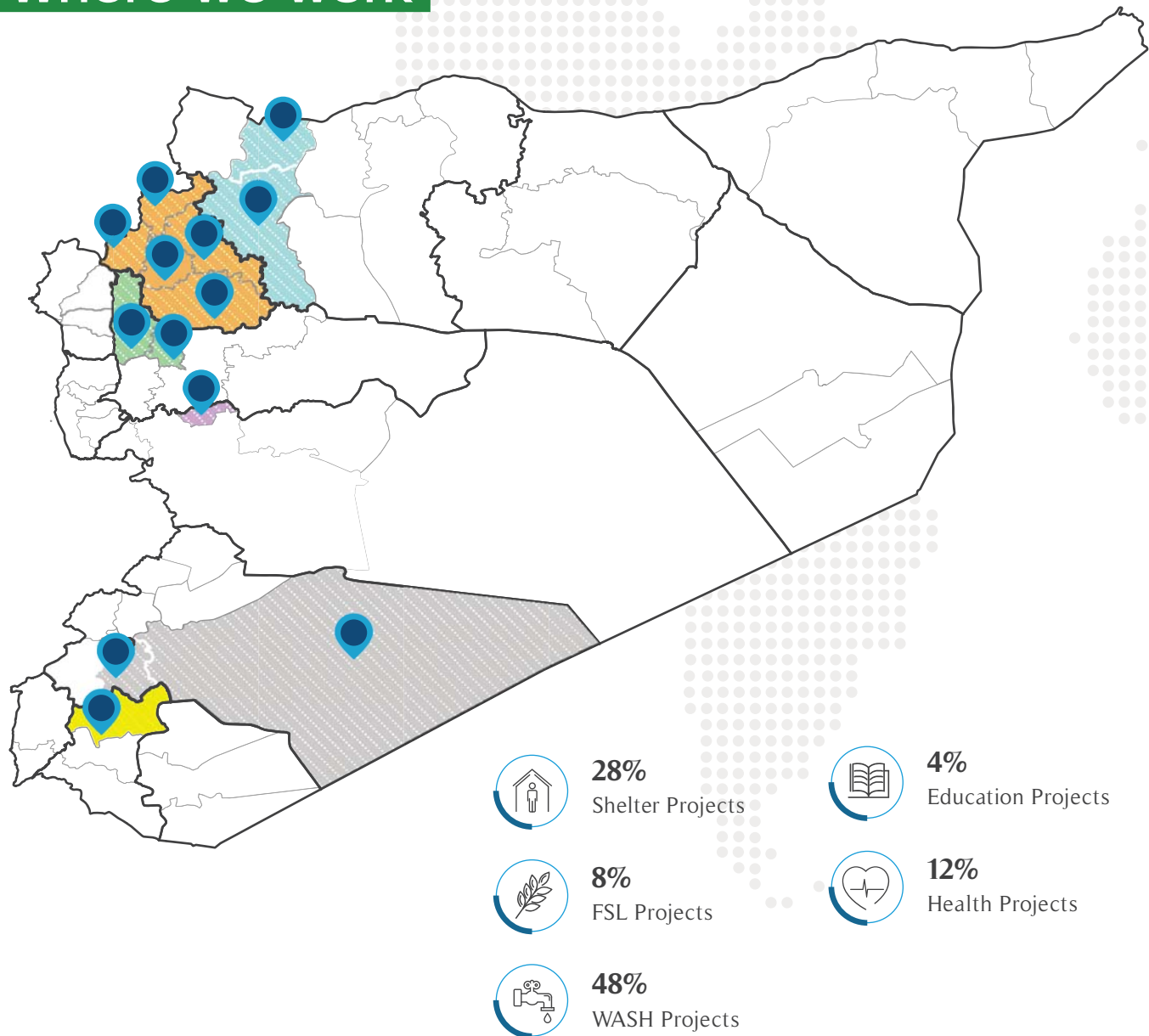
Ensure reactivation and sustain service for water and sanitation systems, operation and maintenance and activation for tariff system .



### **Technical Consultation & Capacity Building:**

Provide Engineering support and consultations and capacity building for local communities and NGOs and stabilization partners

## Where we work





773,242

Total Number of People  
Benefited from BINAA in  
2017

3,986,396

Total Number of People  
Benefited from BINAA  
since 2014



## WASH



535,204

PEOPLE BENEFITING FROM  
WASH PROJECTS



\$ 3,142,108

TOTAL BUDGET AMOUNT



## Health



99,900

SERVICES PROVIDED IN  
HEALTH PROJECTS



\$ 792,081

TOTAL BUDGET AMOUNT



## Shelter



50,946

PEOPLE BENEFITING FROM  
SHELTER PROJECTS



\$ 1,849,434

TOTAL BUDGET AMOUNT



## FSL



20,766

PEOPLE BENEFITING FROM  
FSL PROJECTS



\$ 541,518

TOTAL BUDGET AMOUNT



## Education



66,426

PEOPLE BENEFITING FROM  
EDUCATION PROJECTS



\$ 222,104

TOTAL BUDGET AMOUNT



RESULTS IN NUMBERS



# WASH Projects

Before the crises, people were served by centralized state-owned water system. The sewage systems were existed only in the main cities whereas the rest of cities relied on local managed solutions.

In %51 ,2017 of the population lost their regular access to the water network (HRP 2017)

In 14.6 ,2018 M people became in need for wash support, 7.6 M are in acute humanitarian needs. (HNO 2018)

In 2017, Binaa responded to 204.,535 people in this sector. BINAA through its extended engineering and humanitarian work experiences set a goal to improve sustainable access to adequate and safe WASH services for people in need as main goal which achieved through:

- Restoration of existed water and sewage infrastructure/ systems.
- Operation of the rehabilitated and restored WASH facilities.
- Supporting systems and operations' sustainability.
- Improving WASH in schools, and health facilities.
- Supporting the improvement of quality assurance of the WASH facilities and systems.

Moreover, Binaa created a provision of WASH live-saving support, in parallel with hygiene activities; distribution, and campaigns for IDPs in shelters and camps, especially with the massive displacement waves during this year.



**535,204**

People benefiting  
from Projects



**12**

Rehabilitated water  
systems



**Partners**

UNICEF - Global Communities - World Vision  
King Salman Center

## System restoration and operation:



BINAA provided comprehensive intervention in WASH in coordination with the WASH cluster in Turkey Hub working X-Boarder and its partners, in Idleb, Aleppo, Rural Damascus, Hama, and Daraa.

BINAA implemented 7 projects, reached 535,204 people, with cost total budget of 3,142,108 \$, that includes:

- Rehabilitation for 12 water stations.
- Rehabilitation of electrical grid and transmission lines which feed the whole water system in Ma'arrat An Nu'man City in Idleb.
- Distribution of 8377 hygiene kits.
- Supporting 2500 H.H with water trucking for 6 months, and 6073 H.H for one month
- Provision of Latrines in Camps for 1040 HHs in 2 Camps
- Providing fuel and salaries to support operation of 8 water systems for 5- 3 months
- Provide training set ( technical and management) and site supervision for 8 water units staff.
- Activated the tariff system (cost recovery) in 8 communities, which ensures service sustainability
- 
- Rehabilitation of 2 sewage systems which serve 6417 HHs.





87

Trained individuals



18

Trained local councils



Partners

People in Need, Unicef

## Capacity Building:



BINAA works in providing of engineering studies and capacity development services for local councils including projects related to constructions, water systems, sewage systems and waste management.

One of BINAA capacity building programs was conducted in coordination with People In Need (PIN). The scope was to organize and deliver WASH focused trainings and mentoring sessions for the representatives of 6 Local Councils from Aleppo and Idleb Governorates, and Services Directorate of Idleb Provincial Council, for a total number of 32 training/sessions days.

Training methodology and materials were prepared by BINAA technical team in close consultation with PIN Capacity Development staff. In addition to pre- and post- testing tools to evaluate the training impact. The training was practical including group work, consultation and mentoring, WASH projects management and implementation in the field; it also corresponded with the needs and existing capacities of the LCs.

BINAA also delivered trainings to water units staff under UNICEF fund. BINAA trained the water unit workers of 7 local councils.

Training topics:

- Transparency and Accountability;
- WASH Sphere Minimum Standards;
- WASH Needs Assessments;
- Operation and Maintenance, and Inventory of Water Resources and Management;
- Project proposals development'
- Engineering supervision, Monitoring and evaluation best practices.
- Tariff/Cost recovery System.

To ensure the best support provided to the trainees and LCs, BINAA team mentoring sessions to each of the attending LC during the training days.



# FSL Projects

About 9 M people are in need of food, agriculture, and livelihoods related activities. (HRP 2017)

BINAA depending on its experience in FSL since 2013, with considering the fact that Syrians dependency on humanitarian food assistance will continue in 2017 and beyond, BINAA put set a main objective goal to support people livelihoods and improve linkage with value chain. This will have longer-term impact on the targeted communities and support their resilience, and independency from humanitarian funds.

In 2017, BINAA implemented agriculture

and livestock projects in Idleb, Aleppo and Rural Damascus (be-sieged), and. BINAA reached 20,766 beneficiaries for 6 months, by implementing 7 projects with total budget of, 1,060,354 \$ budget (cash and in-kind).

Binaa projects' BINAA interventions focus on supporting value chains through income generation activities, provision of agriculture and livestock inputs, support and restore local markets, in line with trainings for develop the capacity of veterinarians and agronomists to restore the local systems and capacities in the targeted locations.



**6,606**

People benefiting  
from Programmes



**112.5**

Tons of Wheats  
Produced



**Partners**

Expertise France

## Agricultural Programmes



Throughout BINAA's sustainable projects, we have been working on providing food security for the IDPs and local communities. As we aim to satisfy basic food security and needs while enhancing HHs resilience and independence and also improving Beneficiaries well-being. BINAA works on improving a family's income and reviving the local markets with valuable and needed products.

BINAA, in partnership with many international organizations, has been implementing over 5 Agricultural programmes since 2014 targeting over 60,360 individuals (10,060 HHs) from the IDPs and host communities. The aim of the programmes is to alleviate economic insecurity of displaced households due to loss in sources of livelihoods. Moreover, BINAA is contributing in wheat cultivation and production (100 acres on average each year) in Ghouta.

In light of the situation in Syria, Binaa has designed a project that works on attaining economic stability and self-reliance for IDPs and host communities in Ghouta targeting directly 25 skilled HHs through a multi-phased project.

The project aims to produce 25 tons of dried apricot rolls (Kamerdin) and plant 25 donums of wheat. The products are to be sold in all Ghouta local markets (in the areas controlled by GoS and the areas controlled by opposition). This will enhance the peace and the relationships with Syrian people in areas under different controlled parties. We estimate that at least 5,000 vulnerable HHs will afford to buy this product.

This project aims to revive the local markets inside eastern Goutha, and strengthen the resilience of the population living in the area.



**100**

Acres Planted / year



**158**

Job Opportunity  
per Project





**59,454**

People benefiting from  
Livestock Programmes



**7,300**

Veterinarian kits  
distributed



**Partners**

FAO, UN OCHA



**B**INAA has previous and ongoing operations in different governorates in response to the challenges facing the livestock sector. BINAA is and has implemented projects in Rural Damascus, Idleb, and Aleppo.

One of BINAA's recent interventions was funded by HPF (Agriculture and livestock support) in Ghouta supporting 500 vulnerable HHs with Beet seeds, Municipal organic fertilizer, Pesticides, Insecticide, Fungicide, Fodder for animals, and Brochure.

Over 5 Livestock programmes were implemented by BINAA since 2014 targeting over 64,260 individuals (10,710 HHs) from the IDPs and host communities. All interventions with HPF, FAO, GIZ, and others are part of broad strategy of BINAA to contribute in supporting the recovery of people's resilience in many areas inside Syria.

BINAA's ongoing interventions in the Ghouta (Also funded by HPF) is the livestock support project in Ghouta supports 350 HHs (2,100 individuals). In this project, BINAA is providing livestock inputs (two female sheep, five laying hens, fodder for one month; and veterinary) in order to provide critically needed food components (milk, eggs, and meat), and livelihoods.

Farther more, BINAA provides skill development training for men and women on how to generate income from livestock, how to create and preserve various dairy products and establishing small businesses.





# Shelter is Dignity

Shelter is outstanding challenge facing humanitarian response in Syria from the beginning when a huge destruction happened in houses and infrastructure, in addition to the massive displacements of people from their houses, villages and cities for several years.

BINAA strategy, was to support sustainable solutions aim to improve protection, and social cohesion in a line with live saving activities. Including the provision of NFI/Shelter/ Winter kits, cash for rent, houses, and collective centers rehabilitation, and construction of housing units. BINAA's shelter program targeted IDPs and host communities as well where many of peoples' houses were partially destroyed but its places became safe so they can stay in their homes instead of camps.

"4.3 million people in Syria need humanitarian shelter

assistance for 1.9 million of whom the need is acute. There is a lack of adequate housing, which is also becoming increasingly unaffordable. Only 48 per cent of the population in Syria live in accommodation which meets a minimum standard. The range of needs is diverse across different groups, including newly, longterm, and multiple-times displaced families, those in makeshift camps and substandard collective shelters, and others trying to remain in their own damaged homes. Overcrowding, frequent displacement, and reduced service availability also place heavy burdens on host communities, households and natural resources. Shelter needs are especially acute in cities where 70 per cent of IDPs currently live. Substandard shelter increases the vulnerability of all affected groups across all dimensions of need." HRP 2017



50,946

People benefiting from Programmes



1,808

House Rehabilitated



Partners

Global Communities, IOM

## House Rehabilitation & NFI Kits

BINAA designed its shelter program, to response to the identified gaps, and needs, with good understanding of HLP issues and challenges, securing the required technical support and experience.

Over 8 projects, were implemented by BINAA in 2017 with International partners.

Throughout ongoing operations, active networks, experience, and reliable staff, BINAA delivered shelter assistance to 8491 HH, 50,946 individuals (IDPs and Host Communities) with 2,000,000 \$ budget., those Those beneficiaries received support for 9-3 months, through different activities which cover the assessed needs:

- Houses rehabilitation for host communities and families who are hosting IDPs in their

apartment

- -Collective center rehabilitation, aims to secure the adequate shelter spaces for IDPs with the basic services, meeting the minimum humanitarian standards
- Coal and stoves distribution
- NFI Kits distribution
- Shelter Kits distribution
- Mud Houses construction, where IDPs in camps re-settled in the established villages

BINAA 2019-2017 BINAA strategy is planning to increase its capacity in the 'rapid response' mainly, for shelter. Since, as we predict that multiple huge displacement could be occurred as a result of the active fighting and shifting in frontlines, while the sheltering capacity and spaces are very limited in the areas where we are implementing which expected to receive more IDPs from different places.



2,499

Shelter Kits distributed



20

Sub district



6,540

People benefiting  
from Project



1,090

House Constructed



Partners

Qatar Red Crescent



## Mud Houses Project

It is one of most important projects responding to shelter needs in northern Syria, which provides sustainable solution for housing and secure dignity of those who displaced from their villages and cities from several years and living in tents.

After reaching the 6th year in conflict and about 5 years of displacement and living in tents, BINA A with relevant actors in shelter cluster agreed to find solutions which are sustainable and protect the people and their dignity. BINA A engineers come with Mud houses study taking care of all related technical issues and adding improvements to enhance the quality of those houses.

With QRCS, we started our first Mud Village with 100 housing unit, which made by CEB (Comprised earth blocks), equipped with water, sanitation, and electricity, each house

with 36 m2. Mud houses are stable, rigid, insulated, cheap and coming from the local culture.

After the great success of the pilot project, QRCS decided to extend the project with BINA A to reach 2100 unit in 5 villages with mosques, schools, health facilities, safe spaces for women and children, spaces for livelihood activities and local markets.

1090 house, 2 villages implemented in 2017 built by IDPs who will live in, cash for work modality used, 200 workers worked in those villages.



2

No. of villages



200

Work Opportunity  
for IDPs







# Health Projects

“THE THING I WOULD ASK FOR RIGHT NOW IS THAT THE WORLD ACTS IN ORDER TO PROTECT PATIENTS, LIKE WITH UNDERGROUND HOSPITALS. WE NEED PROTECTION.” *Dr. Hasan Al-Araj, former Hama Health Director and Co-Founder of Central Cave Hospital (2016-1970)*

«While the international community fails to protect Syrian medics from systematic aerial attacks on their hospitals, Syrians have developed an entire underground

system to help protect patients and medical colleagues as best they can. The fortification of medical facilities is now considered a standard practice in Syria. These facilities have saved the lives of countless health workers and patients, preserved critical donor-funded equipment, and helped prevent displacement by providing communities with emergency care. However, while Syrian medics have adapted their operations to fit these unique horrors, international donor governments have not adapted their funding.» *SAVING LIVES UNDERGROUND 2017*



**163,200**  
Service



**6**  
Hospitals



**Partners**  
SAMS, SRD, SEMA

## Hospitals Fortification & Rehabilitation



Since 2014, BINAA started to provide Engineering support to improve solutions to protect health facilities, which continue to be target for the airstrikes and bombardment.

Beside the advocacy efforts, BINAA developed engineering techniques to enhance the protection of those facilities, saving lives of patients and staff.

In partnership with the main health specialized NGO's, and in coordination with Health Cluster, and Health directorates, BINAA contributed in construction of 5 underground hospitals, 2 in caves, and fortification and rehabilitation of 7 hospitals which placed in different sub districts in Idleb, Aleppo, Daraa, and Hama. These hospitals continue to provide the health care for people under the operation, and management of the health partners

with approximately 590,000 service all over the year of 2017.

In 2017 BINAA built 2 hospitals, and fortified another 4 hospitals, those health facilities provided approximately 163,200 health service.

Through this intervention, BINAA is supporting durable solution for the infrastructure of health cluster in Syria, and it supports the ability of sustainable services and system.

BINAA is highlighting other important issue facing the health cluster, which is the management of medical wastes, and the need to establish a system which ensure proper management for this type of wastes.



Atareb Hospital



Atareb Hospital - The entrance



# Education Projects

Syria entered 2017 with “175 million children and youth out of school, 5.82 million children and youth in need of education assistance, 1.35 million are at risk of dropping out and 2 million school-age children are displaced” HRP.

Starting from BINAA vision, mission, and values we found, we have responsibility to secure resources and support this sector's need.

Since there will not be a country in the future without effective and stable Education System, BINAA board and staff decided to put

the education as one of the targets in our plan for 2019-2017, where we will work to develop our program, and interventions through adding more specialists to our team, increase coordination efforts with Education Cluster and partners, advocacy for important issues, and secure resources to close the gaps.



67,006

children supported by  
back to school materials



60

Targeted schools



Partners

UNCEF - Private Funds

## Sustain Children Engagement in Schools



In 2017 BIANAA has implemented 2 projects that targeted 168 schools, in 43 subdistrict, reached 67,006 beneficiaries with 222,104 \$ budget.

Education program strategy was in line with HRP response strategy that focus on:

- Scaling up equitable access to learning opportunities
- Enhancing the quality of teaching and learning
- Special focus on areas, where schools are overcrowded with large influx of IDPs.

BINAA, has implemented several education projects inside Syria. BINAA started with construction of 3 model schools that have an efficient and new construction modality which ensure the protection for children and teachers. BINAA were and still committed to run those

schools in 3 semesters each year since 2013 by private funds; donations mainly.

Since 2013, BINAA facilitated a number of education services, through establishment of temporary learning spaces (TLS's), distribution of education supplies, and training the teachers. Also, BINAA projects contribute in developing the capacity of communities, advocacy and awareness campaigns, enhancing response to the current situation and preventing the negative impact of keeping children out of schools. We also respond to the needs of children who abandoned school for several years ago, and now feel too uncomfortable to return.

BINAA is implementing an educational program involves children, teachers, parents, and community leaders to work together.



244

No. of teachers  
trained



17,525

No. of individuals  
receiving awareness  
sessions



# Early recovery

As the crisis has grown protracted, living standards have deteriorated significantly throughout Syria, with varied levels of severity according to the intensity of hostilities. As livelihoods have broken down, millions of people have been thrust into poverty, while recurrent displacement, loss of assets, the impact of unilateral coercive measures, and weakened social protection schemes have further compounded vulnerabilities across the country. This is severely limiting livelihood opportunities for the most vulnerable categories of the Syrian population such

as youth, female-headed households and people living with disabilities.” HRP 2017  
Also, 13.8 million people are in need. That the huge influx of IDPs caused by shifting frontlines and active fighting cause additional pressure on resources and infrastructure, where already, there is some challenges come of damage in infrastructure, and lack of physical and human resources, which limit the availability of adequate basic and social services. HRP 2017

According 2019-2017 strategy, B NAA decided to put more focus and efforts to develop its intervention in early recovery and livelihood. Although, it was integrated in most of our projects and implementation modalities but now it become a need and important to be more encouraged and focused on, with development of creative, durable, and effective solutions such as:

- Ensure provision of sustainable and efficient services and basic infrastructure
- Establish and improve livelihoods and value chains
- Strengthen the resilience of affected people through promoting for social cohesion, and community encouragement in early recovery efforts.
- Support the local human resources through trainings and promoting more work opportunities, in community level.

In 2017 BINAA had ER projects and activities which integrated in different project across the clusters:

1. Restored the water and sewage systems in community and ensure sustainable service through:
  - Rehabilitation of the existed infrastructure.
  - Promotion for cost recovery system in local level (tariff system)
  - Supported the establishment of water management units by training the staff, provision of maintenance kits, pay incentives for limited period.
  - Provided a continues, stable and durable solution for power resource by restoration of electricity source (electrical grid and transmission line).
2. Increased sustainable livelihood opportunities, and improved socio-economic status for small farmers, in Eastern Ghouta, through promotion of cooperatives contributing to wheat crop value chain development
3. Comprehensive project to Organize and deliver WASH-focused trainings for representatives of 13 Local Councils (LCs) from Aleppo and Idleb Governorates, mentoring sessions on procurement, proposal writing and engineering supervision, accountability, transparency and best practices in implementing tariff system. Also, awareness for raising campaigns in the projects locations with community leaders and population, to enhance the commitment with the tariff system.
4. Support resilience of small herders and protect livestock in Aleppo, Idleb, Hama and Eastern Ghouta Governorates, through package of activities including provision of feeding inputs, treatment and vaccination campaigns, establish livestock community focal points and networks, trainings for livestock focal points and veterinarians, and support them to access the local markets.

**29**

No. of Active  
Water Unit

**12**

Communities with  
sustained water service

**45**

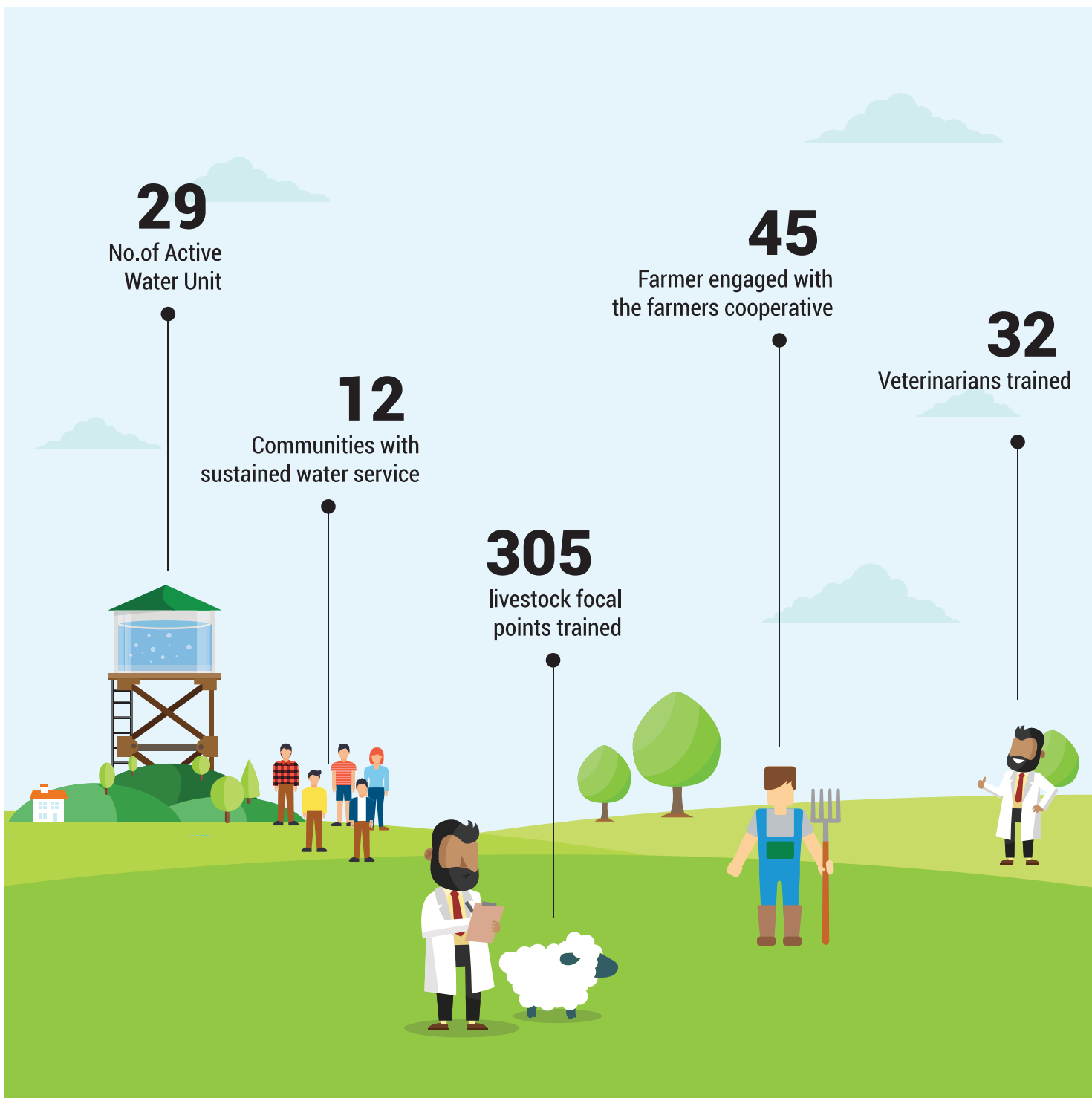
Farmer engaged with  
the farmers cooperative

**32**

Veterinarians trained

**305**

livestock focal  
points trained



## Our Partner

