



**BINAA**  
Organization for Development

**Annual Report**

**2016**







Copyright © 2017  
Binaa Organization for Development Annual Report

    /binaasyria

info@binaadev.org  
www.binaadev.org

# Annual Report

# 2016





# Table of Contents

08 Where We Work

10 Results in Numbers

12 WASH Projects

16 Food Security Projects

21 Shelter & NFI Projects

26 Health Projects

30 Education Projects

32 Story to be told







## Mission

BINAA is dedicated to inspire efficiency in syrian people and implement sustainable programs.

## Vision

Syrian society has the best ability to mobilize the available resources and Syrian people have the opportunity to achieve their self-realize.





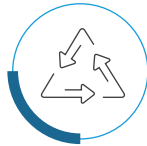
# Binaa Values



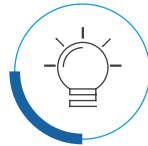
**High Quality**



**Continuous Development**



**Sustainability**



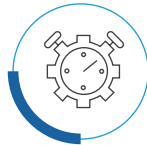
**Innovation**



**Human Dignity**



**Model Project**



**Efficiency**



**Excellence**



## What Binaa does



### **Shelter and NFIs Projects:**

improve housing and shelter conditions, weather and winter protection, construction of mud villages.



### **Education:**

Education Support Projects including Operations, Rehabilitation, learning materials and capacity building .



### **Health:**

Fortification, rehabilitation and construction works and Engineering studies for Safe Hospitals and health facilities



### **FSL Projects:**

Support livelihoods and food security through sustained agricultural and livestock projects.



### **WASH Projects:**

Ensure reactivation and sustain service for water and sanitation systems, operation and maintenance and activation for tariff system .

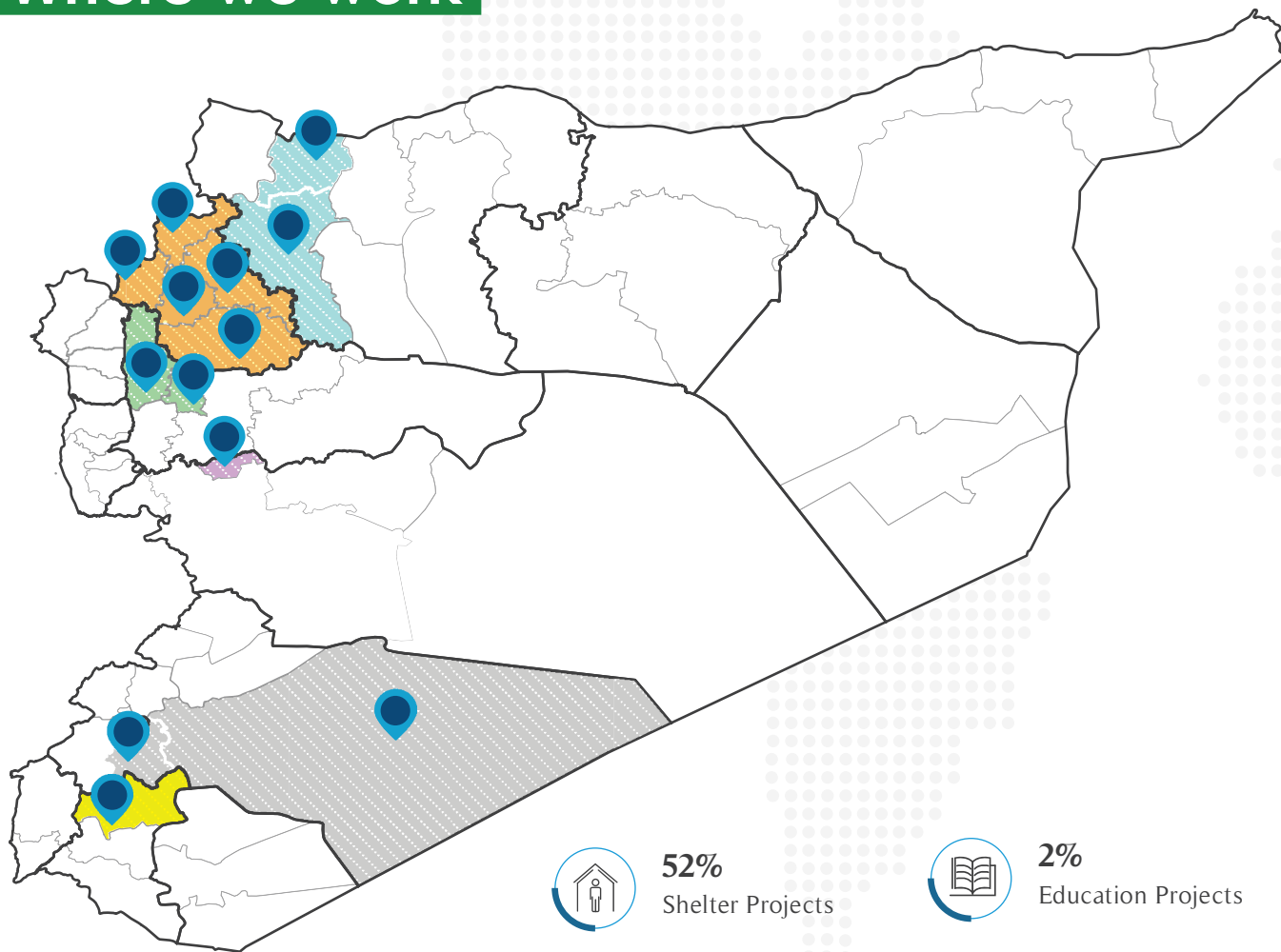


### **Technical Consultation & Capacity Building:**

Provide Engineering support and consultations and capacity building for local communities and NGOs and stabilization partners



## Where we work



**52%**  
Shelter Projects



**2%**  
Education Projects



**9%**  
FSL Projects



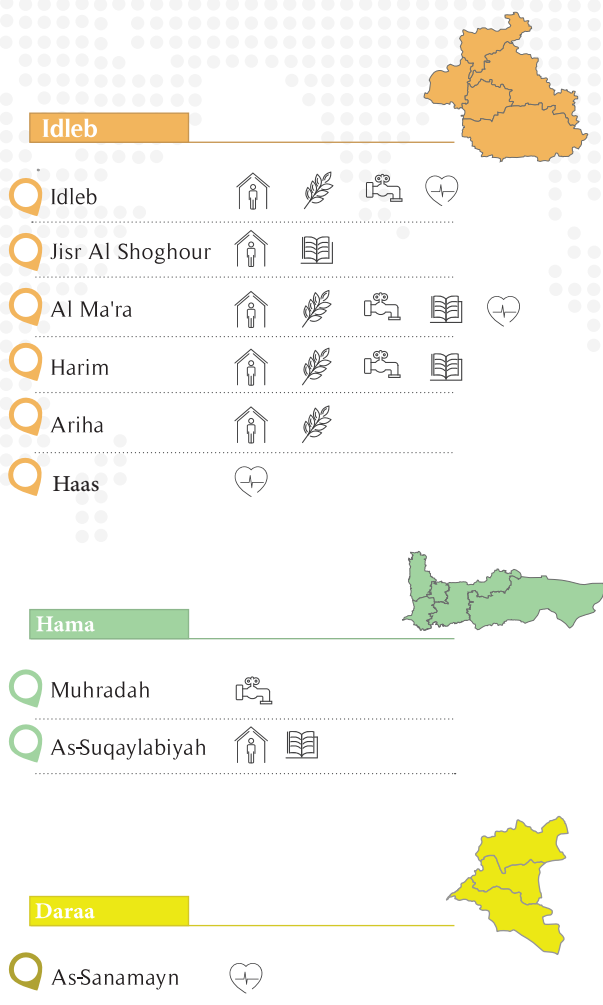
**10%**  
Health Projects



**27%**  
WASH Projects

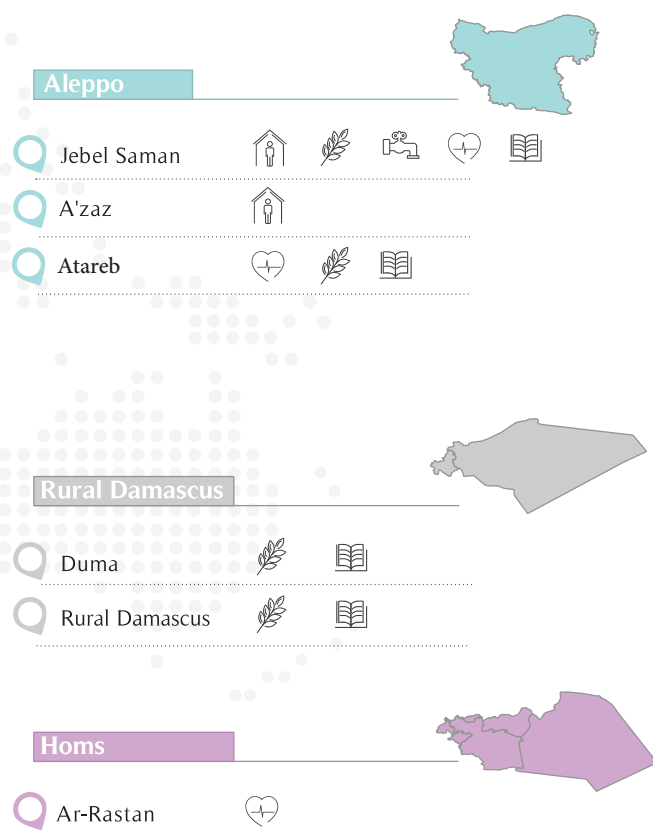
# 3,213,154

Total Number of People  
Benefited from BINAA  
since 2014



# 1,548,500

Total Number of People  
Benefited from BINAA in  
2016







## WASH



**630,000**

PEOPLE BENEFITING FROM  
WASH PROJECTS



**3,300,334 \$**

TOTAL BUDGET AMOUNT



## Health



**570,000**

SERVICES PROVIDED IN  
HEALTH PROJECTS



**1,221,500 \$**

TOTAL BUDGET AMOUNT



## Shelter



**230,400**

PEOPLE BENEFITING FROM  
SHELTER PROJECTS



**6,356,000 \$**

TOTAL BUDGET AMOUNT



## **FSL**



**66,060**

PEOPLE BENEFITING FROM  
FSL PROJECTS



**1,126,000 \$**

TOTAL BUDGET AMOUNT



## **Education**



**52,040**

PEOPLE BENEFITING FROM  
EDUCATION PROJECTS



**207,475 \$**

TOTAL BUDGET AMOUNT



RESULTS IN NUMBERS





# WASH Projects

While the crisis in Syria has left no one untouched, it has impacted upon people in different ways, and infrastructure specially in Electricity, water and sanitation. According to HNO 14.9 2017 M people are in need for WASH support and 8.2 M are in acute need, in 2016 BINAA responded to 864,539 people in this sector.

Starting from BINAA capacity in Engineering and infrastructure and 4 years' experience in humanitarian response, BINAA participated in needs assessments, planning for WASH response in Syria in coordination with other actors

through the Cluster in Turkey and Whole of Syria WoS. In 2016 BINAA provided comprehensive intervention in WASH which includes restoring for existed infrastructure (water and sanitation), supporting longer term service by activation of Tariff System and improving the local community capacity. Main messages in WASH:

- Water and sewage infrastructure require increased support to continue provide minimum level of services
- Operation costs largely expensive due to dependency on fuel for electricity generation.



**471,000**

People benefiting  
from Projects



**18**

Rehabilitated water  
systems



**Partners**

UNICEF, OCHA, Save the Children,  
Relief International

## Water Station Maintenance & Rehabilitation



**B**INAA provided comprehensive intervention in WASH through the X-boarder operation in Idlib, Aleppo, Rural Damascus, Hama, and Daraa.

BINAA implemented 5 projects in 20 communities and 9 camps and reach 864,539 beneficiaries with 3,300,000 \$ budget, that includes:

- Rehabilitation for 18 water station.
- Rehabilitation and maintenance for water and sewer network.
- Provision of hygiene kits.
- Solid waste management.
- Activation of Tariff system and Capacity development for water units.
- Operation and Maintenance for Water systems.
- Water Quality Control.

BINAA promoted cost recovery model through activation of Tariff system, so sustained and longer-term service.

BINAA participated in Water Infrastructure Survey with group of INGOs and NNGOs in lead of UNICEF, that covered 10 governorates and 1036 water station.

In WASH program BINAA built great partnerships with UNICEF, Save the Children, Relief International and OCHA-HPF.





**159,000**

People with access to solid waste management



**9**

Targeted camps



**Partners**

Save the Children



Safe drinking water, sanitation and hygiene (WASH) are critical to people's health and well-being, and especially to maternal, newborn and child health (MNCH). Almost %10 of the global burden of disease is attributable to unsafe WASH and women and children are most affected by the consequences of poor access to these services. improvements in WASH are key to improving women and children's health in high burden countries.

Since 2014, BINAA has been working for a stronger WASH sector, and better coordination between the health and WASH sectors, that come in planning, coordination and implementation of projects which ensure this link. With Save the Children in 9 camps and 8 communities BINAA worked to provide safe water through water tracking, maintain the sanitation (sewage network and latrines), and solid waste management, in addition of awareness hygiene campaigns for communities and individuals. This project provided those services to 159,000 people within 10 months.





**235**  
Trained individuals



**47**  
Trained local councils



**Partners**

People in Need, Unicef

## Capacity Building:



**B**INAA works on supplying relevant organizations with engineering studies and to capacity building to provide the necessary infrastructure for their work. Including projects related to telecommunications, civil defense, construction solutions for the infrastructure and local council capacity building.

One of BINAA capacity building programs was conducted in coordination with People In Need (PIN). The scope was to organize and deliver WASH-focused trainings for the representatives of 29 Local Councils from Aleppo and Idleb Governorates, and Services Directorate of Idleb Provincial Council, for a total number of 36 training days.

Training methodology and materials were prepared by BINAA technical team in close consultation with PIN Capacity Development staff. In addition to pre- and post- testing tools to evaluate the training impact. The training was practical including group work, consultation and mentoring, WASH projects management and implementation in the field; it also corresponded with the needs and existing capacities of the LCs.

Training topics:

- Transparency and Accountability;
- WASH Sphere Minimum Standards;
- WASH Needs Assessments;
- Operation and Maintenance, and Inventory of Water Resources and Management
- Tariff System.

To ensure the best support provided to the trainees and LCs, BINAA team one-on-one mentoring sessions to each of the attending LC during the training days.



# FSL Projects

Throughout BINAA's sustainable projects, we have been working on providing food security to IDPs and host communities. All projects focus mainly on improving a family's income and reviving the local markets with valuable and needed products through:

Agriculture and livestock Projects that include:

Provision of seeds with agriculture and livestock inputs, Processing service operations after planting and/or distribution of inputs with consultation services and related trainings, and Distributing and

selling the agricultural and/or livestock production in local market and the nearby areas at cost.

Veterinary services and kits distribution project: Provision of inputs, veterinary services and nutritional supplements, and Provision of veterinary consultation services and related trainings.

In 2016 BINAA has implemented 5 different projects 2 of which are still ongoing in 2017 in Aleppo, Idleb and Rural Damascus governorates, targeting in 2016 over 66,060 beneficiaries. With a total budget of 1,126,000 \$ for all the projects.





**6,606**

People benefiting  
from Programmes



**112.5**

Tons of Wheats  
Produced



**Partners**

Expertise France



## Agricultural Programmes

Throughout BINAA's sustainable projects, we have been working on providing food security for the IDPs and local communities. As we aim to satisfy basic food security and needs while enhancing HHs resilience and independence and also improving Beneficiaries well-being. BINAA works on improving a family's income and reviving the local markets with valuable and needed products.

BINAA, in partnership with many international organizations, has been implementing over 5 Agricultural programmes since 2014 targeting over 60,360 individuals (10,060 HHs) from the IDPs and host communities. The aim of the programmes is to alleviate economic insecurity of displaced households due to loss in sources of livelihoods. Moreover, BINAA is contributing in wheat cultivation and production (100 acres on average each year) in Ghouta.

In light of the situation in Syria, Binaa has designed a project that works on attaining economic stability and self-reliance for IDPs and host communities in Ghouta targeting directly 25 skilled HHs through a multi-phased project.

The project aims to produce 25 tons of dried apricot rolls (Kamerdin) and plant 25 donums of wheat. The products are to be sold in all Ghouta local markets (in the areas controlled by GoS and the areas controlled by opposition). This will enhance the peace and the relationships with Syrian people in areas under different controlled parties. We estimate that at least 5,000 vulnerable HHs will afford to buy this product.

This project aims to revive the local markets inside eastern Goutha, and strengthen the resilience of the population living in the area.



**100**

Acres Planted / year



**158**

Job Opportunity  
per Project









**59,454**

People benefiting from  
Livestock Programmes



**7,300**

Veterinarian kits  
distributed



**Partners**

FAO, UN OCHA

## Livestock programmes



**B**INAA has previous and ongoing operations in different governorates in response to the challenges facing the livestock sector. BINAA is and has implemented projects in Rural Damascus, Idleb, and Aleppo.

One of BINAA's recent interventions was funded by HPF (Agriculture and livestock support) in Ghouta supporting 500 vulnerable HHs with Beet seeds, Municipal organic fertilizer, Pesticides, Insecticide, Fungicide, Fodder for animals, and Brochure.

Over 5 Livestock programmes were implemented by BINAA since 2014 targeting over 64,260 individuals (10,710 HHs) from the IDPs and host communities. All interventions with HPF, FAO, GIZ, and others are part of broad strategy of BINAA to contribute in supporting the recovery of people's resilience in many areas inside Syria.

BINAA's ongoing interventions in the Ghouta (Also funded by HPF) is the livestock support project in Ghouta supports 350 HHs (2,100 individuals). In this project, BINAA is providing livestock inputs (two female sheep, five laying hens, fodder for one month; and veterinary) in order to provide critically needed food components (milk, eggs, and meat), and livelihoods. Farther more, BINAA provides skill development training for men and women on how to generate income from livestock, how to create and preserve various dairy products and establishing small businesses.









# Shelter is Dignity

Since 2013, BINAA has been responding to IDPs and host communities need regarding both shelter and NFIs.

BINAA worked in coordination with related NNGOs, INGOs and UN agencies to improve the shelter response to provide innovative solutions in Syria because of the multi years displacement and lack of shelters and houses, either in camps or in host communities.

In 2016, BINAA implemented 13 projects in partnerships with different International Organizations and UN agencies, through direct access on ground and worth network of engineers and specialists. In our Shelter NFI program we

reached 38400 family ( 230400 people) IDPs and host communities, this programs contains:

- Construction of Shelters ( mud Villages)
- Rehabilitation for collection centers.
- Rehabilitation for houses.
- Rehabilitation and maintenance for WASH facilities in collective centers and host communities.
- Provision of shelter kits which decrease weather effects in winter mainly
- Provision of coal and stoves.

Also in shelter NFI cluster BINAA aims to increase the quality of Shelter response through reaching minimum standards (technical) for shelter rehabilitation where we can ensure providing humanitarian response in Quality.





**221,400**

People benefiting from Programmes



**7,300**

House Rehabilitated



**Partners**

Global Communities,  
Human Appeal, IOM



## House Rehabilitation & NFI Kits

Over 13 projects were implemented by BINAA with international partners. Through ongoing operations in 2016 in Northern Syria, active networks, experience and reliable staff BINAA delivered shelter assistance to 16,181 vulnerable IDP and host community HHs (114,163 individuals).

In 2016, BINAA implemented projects for IOM, GCs, HAI and others including the distribution of sealing and winterization shelter kits, providing technical installation support to particularly vulnerable HHs, in addition to houses rehabilitation.

BINAA is currently the implementing partner for Global Communities in the North Syria Resiliency Program (SRRP); a multi-sectorial project in

Aleppo, Hama, and Idleb. We aim to reduce the vulnerability of 3,300 HHs (23,100 individuals) by improving current living and shelter conditions to SPHERE minimum standards. This project targeting 50 communities, 105,163 beneficiaries. BINAA is responsible for:

1. Distribute in-kind assistance; conducting inspections and QA/QC of all activities; in addition to conducting on-site guidance and outreach to beneficiary families on use of inputs;
2. Supervising shelter and collective center rehabilitation in Aleppo, Hama, and Idleb,
3. Implement a portion of the coal/stoves activity in Aleppo, Hama, and Idleb.
4. In addition to a WASH component to be implemented by the WASH department.



**12,478**

Shelter Kits  
distributed



**1,750**

Dignity Kits  
distributed



**7,800**

People benefiting  
from Project



**1,000**

House Constructed



**Partners**

Qatar Red Crescent



## Mud Houses Project

It is one of most important projects responding to shelter needs in northern Syria, which provides sustainable solution for housing and secure dignity of those who displaced from their villages and cities from several years and living in tents.

After reaching the 6th year in conflict and about 5 years of displacement and living in tents, BINA with relevant actors in shelter cluster agreed to find solutions which are sustainable and protect the people and their dignity. BINA engineers come with Mud houses study taking care of all related technical issues and adding improvements to enhance the quality of those houses.

With QRCS, we started our first Mud Village with 100 housing unit, which made by CEB (Comprised earth blocks), equipped with water, sanitation, and electricity, each house

with 36 m2. Mud houses are stable, rigid, insulated, cheap and coming from the local culture.

After the great success of the pilot project, QRCS decided to extend the project with BINA to reach 2100 unit in 5 villages with mosques, schools, health facilities, safe spaces for women and children, spaces for livelihood activities and local markets. 1000 house, 3 villages implemented in 2016. Those villages built by the IDPs who will live in in cash for work modality, 300 workers built this villages.



**3**

No. of villages



**300**

Work Opportunity  
for IDPs









Construction work for Mud Village in Rural Idlep





# Health Projects

“THE THING I WOULD ASK FOR RIGHT NOW IS THAT THE WORLD ACTS IN ORDER TO PROTECT PATIENTS, LIKE WITH UNDERGROUND HOSPITALS. WE NEED PROTECTION.” *Dr. Hasan Al-Araj, former Hama Health Director and Co-Founder of Central Cave Hospital (2016-1970)*

«While the international community fails to protect Syrian medics from systematic aerial attacks on their hospitals, Syrians have developed an entire underground

system to help protect patients and medical colleagues as best they can. The fortification of medical facilities is now considered a standard practice in Syria. These facilities have saved the lives of countless health workers and patients, preserved critical donor-funded equipment, and helped prevent displacement by providing communities with emergency care. However, while Syrian medics have adapted their operations to fit these unique horrors, international donor governments have not adapted their funding.» *SAVING LIVES UNDERGROUND 2017*






**570,000**  
Service



**4**  
Hospitals



**Partners**  
SAMS, SHAM Foundation  
SRD, SEMA



## Hospitals Fortification & Rehabilitation

Since 2014, BINAA has been responding to the 1# demand which is protected health facilities and developed different models of Hospitals fortification and safe hospitals (underground and in caves).

In partnership with several Syrian and International NGOs and in coordination with Health cluster, BINAA contributed in construction of 5 underground and 2 in cave hospitals in addition of fortification and rehabilitation to 5 hospitals.

Main Activities:

- Fortification for entrance and exits
- Expansion for health facilities capacity.
- Provision of required systems to ensure proper medical standards
- Construction of fortified underground hospitals
- Design and supervision for all works on ground





Construction work for the Cave hospital in Rural Idlep





BINA A

Organization for Development

Construction work for the Cave hospital in Rural Aleppo





# Education Projects

BINAA has implemented several projects inside Syria to build schools (BINAA model schools) and fulfill operational needs. BINAA projects in 2016 included:

- Supplying all equipment required to run the schools; rehabilitating the buildings; and providing teacher salaries and monitoring of the education process to ensure standards.
- Providing trainings for the staff to improve their teaching methods, build their capacity, and keep them engaged.
- For traditional education, we provide life skill trainings for the students.

- Providing transportation for students and teachers to encourage attendance, especially focused on women and girls.

Schools and centers rehabilitation works of include: Provision of work, executive plans and BoQs, and Implementing and/or supervising the rehabilitation works.

In 2016 BINAA has implemented 2 different projects one of them is still ongoing in 2017 in Aleppo and Idlib governorates, targeting over 52,040 beneficiaries. With a total budget of 207475 \$ for all the projects.





**34,600**

children supported by  
back to school materials



**60**

Targeted schools



**Partners**

UNICEF



## Sustain Children Engagement in Schools

**B**INAA has implemented several projects inside Syria to build schools and fulfill operational needs. BINAA has started with constructing model schools that have an efficient Construction, effective model and sustainable building style.

Since 2013, BINAA facilitated a number of education services through establishment of temporary learning spaces (TLS's), distribution of education supplies, and identification and training of teachers.

Also, BINAA projects contribute in developing the capacity of communities, advocacy and awareness campaigns enhancing response to the current situation and preventing the negative impact of keeping children out of schools. We also respond to the needs of children who

abandoned school 2 or 3 years ago and now feel too uncomfortable to return.

BINAA is implementing an education project with UNICEF bring on board education stakeholders involving, children, teachers, parents and community leaders to work together.

Incentive packages are given to motivate 34,600 children, involving school drop-outs and children of school-going age still not attending school, to enroll in schools in the deprived communities.

Furthermore, BINAA assessed in the targeted areas that there are 1500 volunteer teachers and plan to build programs to target the with capacity development program in order to sustain their contribution in education process in that areas.



**240**

No. of teachers  
trained



**17,300**

No. of individuals  
receiving awareness  
sessions



# A STORY TO BE TOLD

In a Qah camp in Idleb, 43 years old Ahmad AL Abdulla lives with his family of 9 people in a small tent. Like many others, they were forced by the war, clashes and security situation to leave the comfort of their home to live jobless, helpless and with no privacy, health care or basic services in a camp.

"I can never forget the night we fled from our home and town to save our lives in search for a safe land for me and my family. We fled to live in a camp in a fragile tent with no privacy, no cleaning, water or health services.

It was not long before BINAA organization came and started working inside the camps that suffered from the piling of waste in the surrounding area that caused illnesses to the residents. In addition to the water and sanitation problems.

But now and thanks to them, as they provided waste management services and removed all garbage from the camps and the area surrounding it. Also, they provided a good water and sanitation service to us all in the camps" Ahmad said. Then he added "I won't say I do not want to return home as soon as I can. But thanks to BINAA, I can say that I would rather live in a safe camp where services are provided, than living back home where I fear that the war might steal one of my children"

“  
thanks to BINAA,  
I can say that I  
would rather live  
in a safe camp  
where services are  
provided, than living  
back home where  
I fear that the war  
might steal one of  
my children”

*Abo Ahmad*